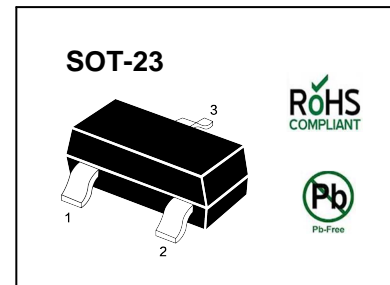
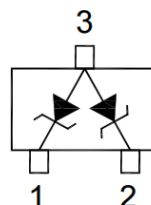


### SILICON PLANAR ZENER DIODES

#### Features

- Zener breakdown voltage range - 2.4 V to 75 V
- Package designed for optimal automated board assembly
- Small package size for high density applications



#### Absolute Maximum Ratings ( $T_a = 25\text{ }^\circ\text{C}$ )

Parameter	Symbol	Value	Unit
Power Dissipation	$P_D$	350	mW
Thermal Resistance, Junction to Ambient <sup>1)</sup>	$R_{\theta JA}$	417	$^\circ\text{C/W}$
Junction and Storage Temperature Range	$T_J, T_S$	- 65 to + 150	$^\circ\text{C}$

<sup>1)</sup> Alumina = 0.4 X 0.3 X 0.024 in, 99.5% alumina

#### Characteristics at $T_a = 25\text{ }^\circ\text{C}$

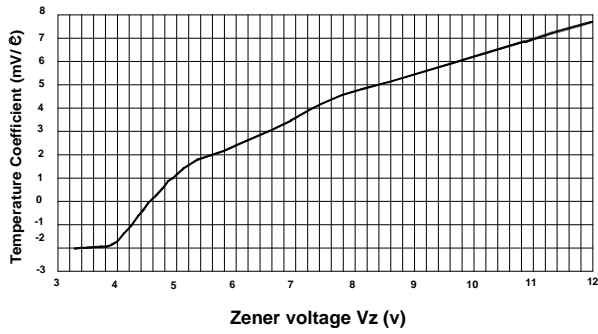
Parameter	Symbol	Max.	Unit
Forward Voltage at $I_F = 10\text{ mA}$	$V_F$	0.9	V

### Electrical Characteristics ( $T_a = 25\text{ }^\circ\text{C}$ unless otherwise noted)

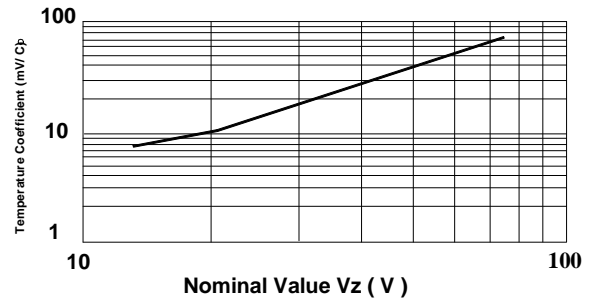
Type	Marking Code	Zener Voltage Range <sup>1)</sup>				Dynamic Resistance		Reverse Leakage Current	
		V <sub>z</sub>			at I <sub>ZT</sub>	Z <sub>ZT</sub>	at I <sub>ZT</sub>	I <sub>R</sub>	at V <sub>R</sub>
		Nom. (V)	Min. (V)	Max. (V)	mA	Max. (Ω)	mA	Max. (μA)	V
BZX84B2V4CA	A31	2.4	2.35	2.45	5	100	5	50	1
BZX84B2V7CA	B31	2.7	2.65	2.75	5	100	5	20	1
BZX84B3V0CA	C31	3	2.94	3.06	5	95	5	10	1
BZX84B3V3CA	D31	3.3	3.23	3.37	5	95	5	5	1
BZX84B3V6CA	EW	3.6	3.53	3.67	5	90	5	5	1
BZX84B3V9CA	E31	3.9	3.82	3.98	5	90	5	3	1
BZX84B4V3CA	F31	4.3	4.21	4.39	5	90	5	3	1
BZX84B4V7CA	G31	4.7	4.61	4.79	5	80	5	3	2
BZX84B5V1CA	H31	5.1	5	5.2	5	60	5	2	2
BZX84B5V6CA	J31	5.6	5.49	5.71	5	40	5	1	2
BZX84B6V2CA	K31	6.2	6.08	6.32	5	10	5	3	4
BZX84B6V8CA	L31	6.8	6.66	6.94	5	15	5	2	4
BZX84B7V5CA	N31	7.5	7.35	7.65	5	15	5	1	5
BZX84B8V2CA	M31	8.2	8.04	8.36	5	15	5	0.7	5
BZX84B9V1CA	P31	9.1	8.92	9.28	5	15	5	0.5	6
BZX84B10CA	Q31	10	9.8	10.2	5	20	5	0.2	7
BZX84B11CA	R31	11	10.8	11.2	5	20	5	0.1	8
BZX84B12CA	S31	12	11.8	12.2	5	25	5	0.1	8
BZX84B13CA	T31	13	12.7	13.3	5	30	5	0.1	8
BZX84B15CA	U31	15	14.7	15.3	5	30	5	0.05	10.5
BZX84B16CA	V31	16	15.7	16.3	5	40	5	0.05	11.2
BZX84B18CA	W31	18	17.6	18.4	5	45	5	0.05	12.6
BZX84B20CA	X31	20	19.6	20.4	5	55	5	0.05	14
BZX84B22CA	Y31	22	21.6	22.4	5	55	5	0.05	15.4
BZX84B24CA	Z31	24	23.5	24.5	5	70	5	0.05	16.8
BZX84B27CA	A41	27	26.5	27.5	2	80	2	0.05	18.9
BZX84B30CA	B41	30	29.4	30.6	2	80	2	0.05	21
BZX84B33CA	C41	33	32.3	33.7	2	80	2	0.05	23.1
BZX84B36CA	D41	36	35.3	36.7	2	90	2	0.05	25.2
BZX84B39CA	E41	39	38.2	39.8	2	130	2	0.05	27.3
BZX84B43CA	F41	43	42.1	43.9	2	150	2	0.05	30.1
BZX84B47CA	G41	47	46.1	47.9	2	170	2	0.05	32.9
BZX84B51CA	H41	51	50	52	2	180	2	0.05	35.7
BZX84B56CA	J41	56	54.9	57.1	2	200	2	0.05	39.2
BZX84B62CA	K41	62	60.8	63.2	2	215	2	0.05	43.4
BZX84B68CA	L41	68	66.6	69.4	2	240	2	0.05	47.6
BZX84B75CA	M41	75	73.5	76.5	2	255	2	0.05	52.5

<sup>1)</sup> Tested with pulses  $t_p = 20\text{ ms}$ .

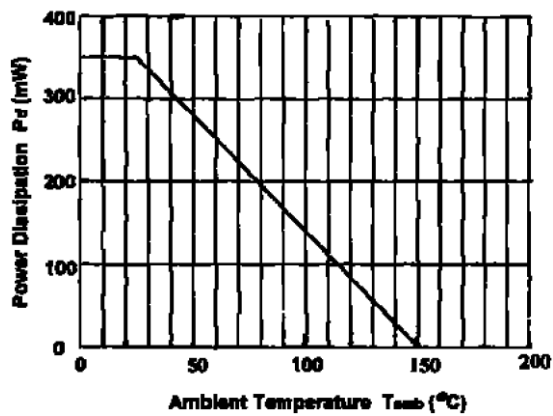
Temperature Coefficient



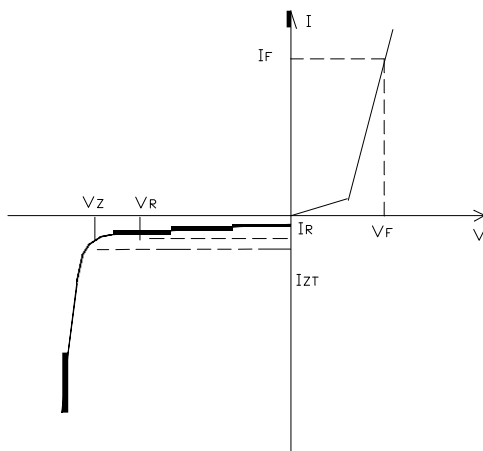
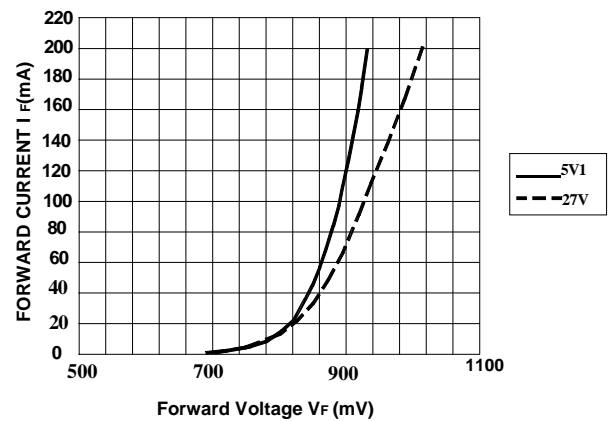
Temperature Coefficient



Power Derating Curve



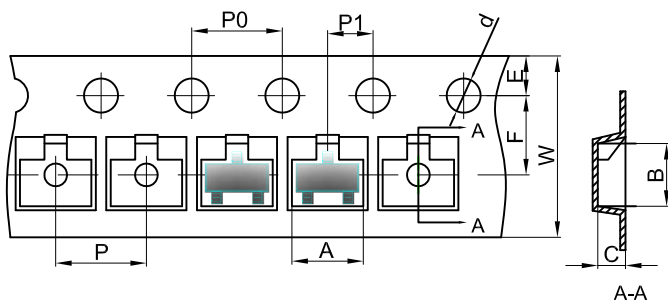
Typical Forward Voltage



Zener Voltage Regulator

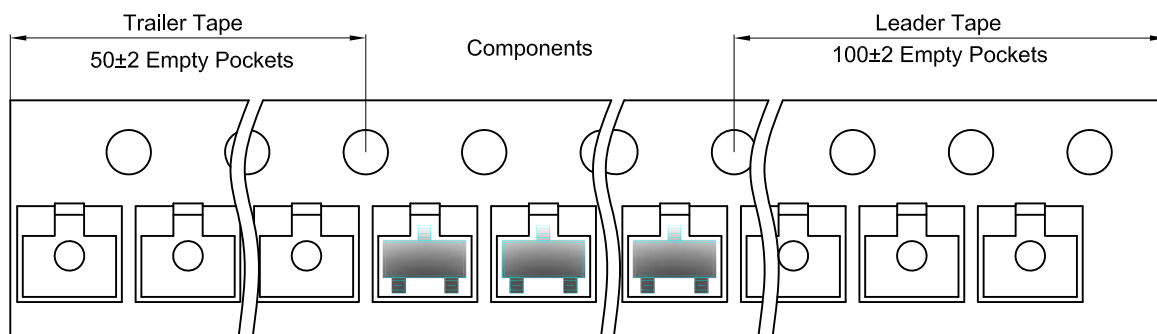
## SOT-23 Tape and Reel

### SOT-23 Embossed Carrier Tape

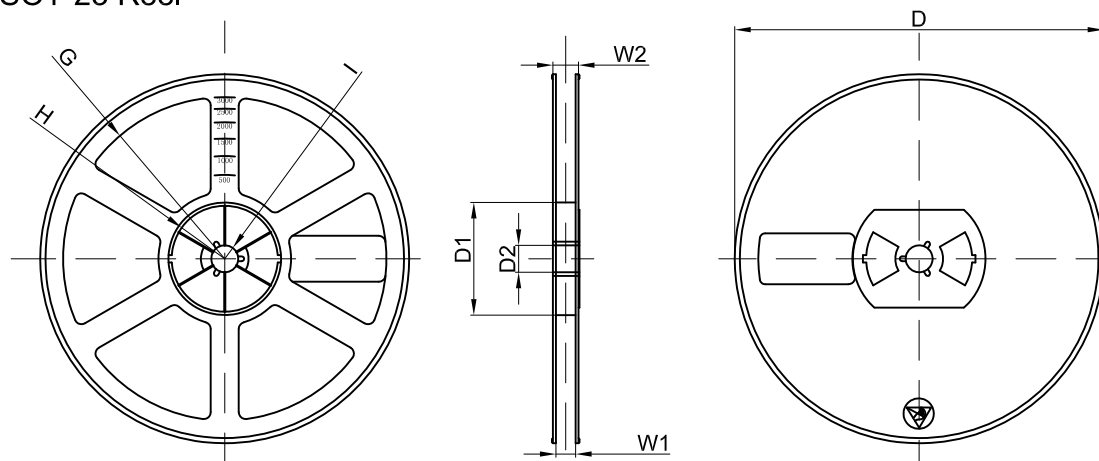


Dimensions are in millimeter										
Pkg type	A	B	C	d	E	F	P0	P	P1	W
SOT-23	3.15	2.77	1.22	Ø1.50	1.75	3.50	4.00	4.00	2.00	8.00

### SOT-23 Tape Leader and Trailer

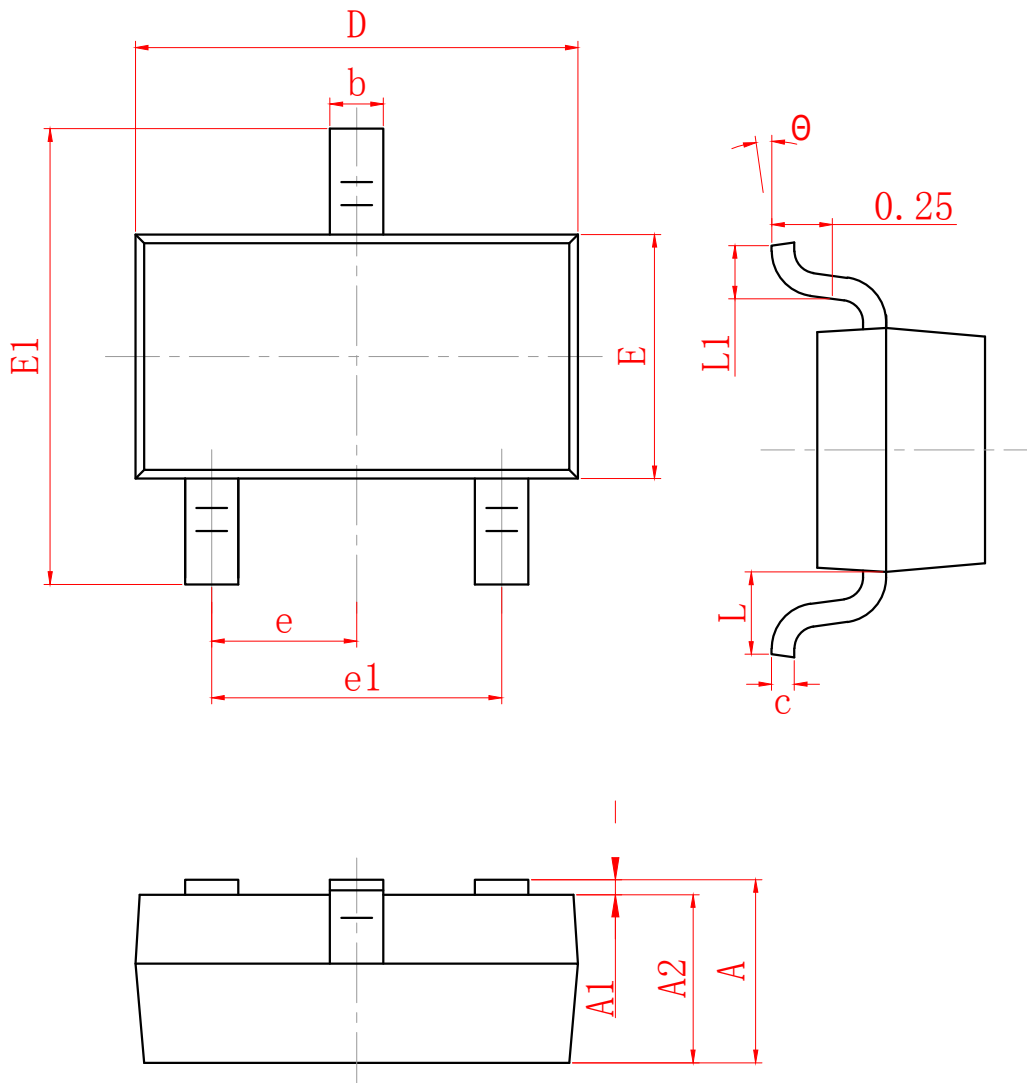


### SOT-23 Reel



Dimensions are in millimeter								
Reel Option	D	D1	D2	G	H	I	W1	W2
7" Dia	Ø178.00	54.40	13.00	R78.00	R25.60	R6.50	9.50	12.30

REEL	Reel Size	Box	Box Size(mm)	Carton	Carton Size(mm)	G.W.(kg)
3000 pcs	7 inch	45,000 pcs	203×203×195	180,000 pcs	438×438×220	



SYMBOL	MILLIMETER	
	MIN	MAX
A	0.900	1.150
A1	0.000	0.100
A2	0.900	1.050
b	0.300	0.500
c	0.080	0.150
D	2.800	3.000
E	1.200	1.400
E1	2.250	2.550
e	0.950 TYP	
e1	1.800	2.000
L	0.550 REF	
L1	0.300	0.500
θ	0°	8°

### DISCLAIMER

JHG PROVIDES TECHNICAL AND RELIABILITY DATA (INCLUDING DATASHEETS), DESIGN RESOURCES (INCLUDING REFERENCE DESIGNS), APPLICATION OR OTHER DESIGN ADVICE, SAFETY INFORMATION, AND OTHER RESOURCES "AS IS" AND WITH ALL FAULTS, AND DISCLAIMS ALL WARRANTIES, EXPRESS AND IMPLIED, INCLUDING WITHOUT LIMITATION ANY IMPLIED WARRANTIES OF MERCHANTABILITY, FITNESS FOR A PARTICULAR PURPOSE OR NON-INFRINGEMENT OF THIRD PARTY INTELLECTUAL PROPERTY RIGHTS.

These resources are intended for skilled developers designing with JHG products. You are solely responsible for

- (1) selecting the appropriate JHG products for your application;
- (2) designing, validating and testing your application;
- (3) ensuring your application meets applicable standards, and any other safety, security, or other requirements.

These resources are subject to change without notice. JHG grants you permission to use these resources only for development of an application that uses the JHG products described in the resource. Other reproduction and display of these resources are prohibited. No license is granted to any other JHG intellectual property right or to any third party intellectual property right. JHG disclaims responsibility for, and you will fully indemnify JHG and its representatives against, any claims, damages, costs, losses, and liabilities arising out of your use of these resources.